

\$239,900 - 701 10388 105 Street, Edmonton

MLS® #E4454468

\$239,900

1 Bedroom, 1.00 Bathroom, 664 sqft

Condo / Townhouse on 0.00 Acres

Downtown (Edmonton), Edmonton, AB

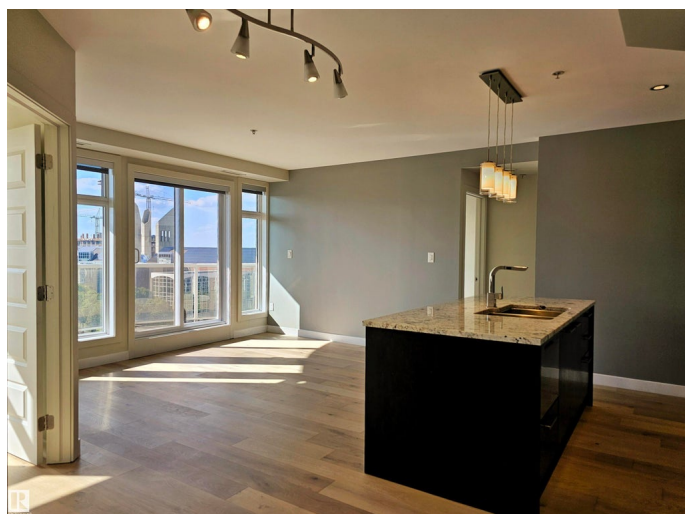
Welcome home to this luxury, one bedroom + den, original-owner residence showcasing pride of ownership and thoughtful updates throughout in the heart of the vibrant downtown core. Bathed in natural light, the west-facing balcony offers sunny skyline views directly overlooking MacEwan University and downtown. The open-concept living area is enhanced with NEW upgraded European longboard flooring (2025) and a fresh, modern repaint (2025). A sleek kitchen features crisp granite countertops, a glass-top stove, stainless steel appliances, and a newer Fisher & Paykel dishwasher (2021). The bedroom enjoys a private corner setting w/ black out blinds, while the spa-inspired bath includes a deep soaker tub. Everyday convenience comes with in-suite laundry, a heated underground parking stall with an industrial welded storage cage, and a BBQ gas line on the balcony. The building offers secure entry, a party room with kitchen, and ample visitor parking—all steps from Rogers Arena, LRT, shopping, and the Ice District.

Built in 2009

Essential Information

MLS® # E4454468

Price \$239,900



Bedrooms	1
Bathrooms	1.00
Full Baths	1
Square Footage	664
Acres	0.00
Year Built	2009
Type	Condo / Townhouse
Sub-Type	Apartment High Rise
Style	Single Level Apartment
Status	Active

Community Information

Address	701 10388 105 Street
Area	Edmonton
Subdivision	Downtown (Edmonton)
City	Edmonton
County	ALBERTA
Province	AB
Postal Code	T5J 0C2

Amenities

Amenities	Air Conditioner, No Animal Home, No Smoking Home, Parking-Visitor, Storage Cage
Parking Spaces	1
Parking	Heated, Underground

Interior

Interior Features	ensuite bathroom
Appliances	Dishwasher-Built-In, Microwave Hood Fan, Refrigerator, Stacked Washer/Dryer, Stove-Electric
Heating	Heat Pump, Natural Gas
# of Stories	22
Stories	1
Has Basement	Yes
Basement	None, No Basement

Exterior

Exterior	Concrete, Stucco
Exterior Features	Playground Nearby, Public Transportation, Schools, Shopping Nearby,

	View Downtown
Roof	Roll Roofing
Construction	Concrete, Stucco
Foundation	Concrete Perimeter

Additional Information

Date Listed	August 23rd, 2025
Days on Market	1
Zoning	Zone 12
Condo Fee	\$502

DATA IS DEEMED RELIABLE BUT IS NOT GUARANTEED ACCURATE BY THE REALTORS® ASSOCIATION OF EDMONTON. COPYRIGHT 2025 BY THE REALTORS® ASSOCIATION OF EDMONTON. ALL RIGHTS RESERVED. Trademarks are owned or controlled by the Canadian Real Estate Association (CREA) and identify real estate professionals who are members of CREA (REALTOR®, REALTORS®) and/or the quality of services they provide (MLS®, Multiple Listing Service®)

Listing information last updated on August 24th, 2025 at 7:47am MDT