

\$269,000 - 10516 108 Avenue, Edmonton

MLS® #E4454355

\$269,000

3 Bedroom, 2.50 Bathroom, 1,365 sqft
Condo / Townhouse on 0.00 Acres

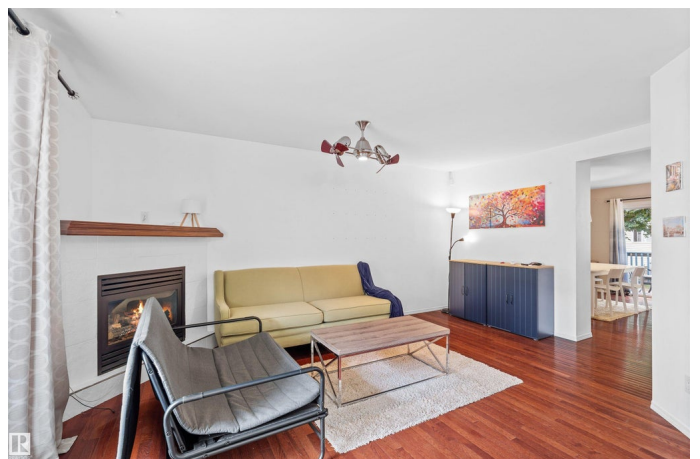
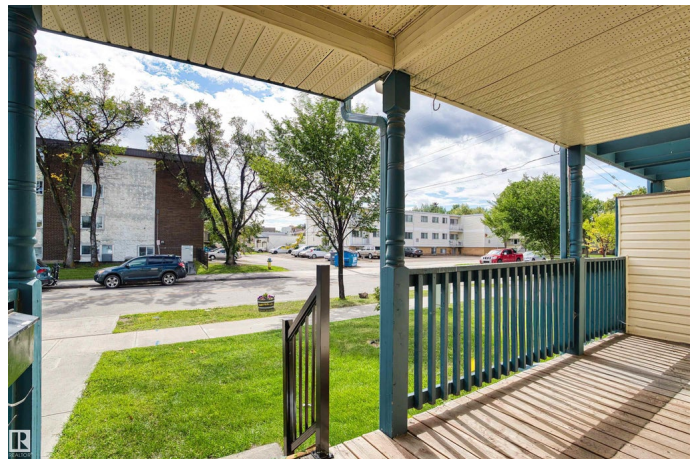
Central Mcdougall, Edmonton, AB

Modern HALF Duplex in Central MacDougall
“ Steps from Downtown & Schools. Welcome
to this spacious home in the heart of
MacDougall, ideally located within walking
distance to NAIT, MacEwan University, the
LRT, and downtown Edmonton. Perfect for
students, professionals, or families seeking
convenience and comfort, this home offers the
best of central living. Inside, you™ find
three bedrooms, four bathrooms, and a
versatile flex room in the basement that can be
used as an office, gym, or guest space. The
main level features an open layout with a
bright living area, a functional kitchen, and
easy access to your private backyard and
deck. This home blends practicality with
location“ making it a fantastic opportunity for
investors, students, or anyone looking to enjoy
vibrant city living.

Built in 2003

Essential Information

MLS® #	E4454355
Price	\$269,000
Bedrooms	3
Bathrooms	2.50
Full Baths	1
Half Baths	3
Square Footage	1,365



Acres	0.00
Year Built	2003
Type	Condo / Townhouse
Sub-Type	Half Duplex
Style	2 Storey
Status	Active

Community Information

Address	10516 108 Avenue
Area	Edmonton
Subdivision	Central Mcdougall
City	Edmonton
County	ALBERTA
Province	AB
Postal Code	T5H 4M8

Amenities

Amenities	See Remarks
Parking	Front Drive Access

Interior

Interior Features	ensuite bathroom
Appliances	Dishwasher-Built-In, Dryer, Hood Fan, Refrigerator, Stove-Gas, Washer, Window Coverings
Heating	Forced Air-1, Natural Gas
Stories	3
Has Basement	Yes
Basement	Full, Finished

Exterior

Exterior	Wood, Vinyl
Exterior Features	No Through Road, Playground Nearby, Public Transportation, Shopping Nearby, See Remarks
Roof	Asphalt Shingles
Construction	Wood, Vinyl
Foundation	Concrete Perimeter

Additional Information

Date Listed	August 22nd, 2025
-------------	-------------------

Days on Market	2
Zoning	Zone 08
Condo Fee	\$381

DATA IS DEEMED RELIABLE BUT IS NOT GUARANTEED ACCURATE BY THE REALTORS® ASSOCIATION OF EDMONTON. COPYRIGHT 2025 BY THE REALTORS® ASSOCIATION OF EDMONTON. ALL RIGHTS RESERVED. Trademarks are owned or controlled by the Canadian Real Estate Association (CREA) and identify real estate professionals who are members of CREA (REALTOR®, REALTORS®) and/or the quality of services they provide (MLS®, Multiple Listing Service®)

Listing information last updated on August 24th, 2025 at 7:32am MDT