

## \$579,900 - 1244 Hays Drive, Edmonton

MLS® #E4453509

**\$579,900**

4 Bedroom, 2.50 Bathroom, 1,970 sqft

Single Family on 0.00 Acres

The Hamptons, Edmonton, AB

Beautifully Maintained Family Home in an Incredible Pond Facing Location! Offering comfort, convenience, and stylish living, this prime property blends modern design with everyday functionality. The open concept main floor boasts 9 foot ceilings, filling the home with natural light, perfect for entertaining or relaxing with family. At the heart of the home is a modern kitchen with hardwood floors, granite countertops, a large island, and a corner pantry, ideal for all your culinary creations. Dining and living areas flow seamlessly to your West facing backyard! Upstairs, a spacious bonus room with vaulted ceiling provides the perfect spot for movie nights, a playroom, or a home office. Upstairs laundry with 3 generous bedrooms and 2.5 baths, including a primary suite with private ensuite, there's a room for everyone. Partially finished basement with a 4th bedroom, while the double attached garage adds convenience. Steps to schools and trails, with quick access to Henday, Whitemud, and shopping!

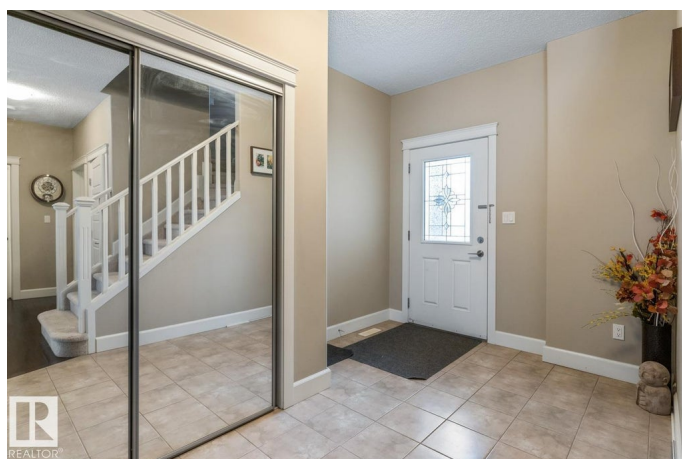
Built in 2011

### Essential Information

MLS® # E4453509

Price \$579,900

Bedrooms 4



Bathrooms	2.50
Full Baths	2
Half Baths	1
Square Footage	1,970
Acres	0.00
Year Built	2011
Type	Single Family
Sub-Type	Detached Single Family
Style	2 Storey
Status	Active

### Community Information

Address	1244 Hays Drive
Area	Edmonton
Subdivision	The Hamptons
City	Edmonton
County	ALBERTA
Province	AB
Postal Code	T6M 0M3

### Amenities

Amenities	On Street Parking, Ceiling 9 ft., Vaulted Ceiling, Vinyl Windows
Parking	Double Garage Attached

### Interior

Interior Features	ensuite bathroom
Appliances	Dishwasher-Built-In, Dryer, Refrigerator, Stove-Electric, Washer, Window Coverings
Heating	Forced Air-1, Natural Gas
Stories	2
Has Basement	Yes
Basement	Full, Partially Finished

### Exterior

Exterior	Wood, Vinyl
Exterior Features	Cross Fenced, Fenced, Landscaped, Playground Nearby, Public Swimming Pool, Public Transportation, Schools, Shopping Nearby
Roof	Asphalt Shingles
Construction	Wood, Vinyl

Foundation                      Concrete Perimeter

**Additional Information**

Date Listed                      August 18th, 2025

Zoning                              Zone 58

DATA IS DEEMED RELIABLE BUT IS NOT GUARANTEED ACCURATE BY THE REALTORS® ASSOCIATION OF EDMONTON. COPYRIGHT 2025 BY THE REALTORS® ASSOCIATION OF EDMONTON. ALL RIGHTS RESERVED.Trademarks are owned or controlled by the Canadian Real Estate Association (CREA) and identify real estate professionals who are members of CREA (REALTOR®, REALTORS®) and/or the quality of services they provide (MLS®, Multiple Listing Service®)  
Listing information last updated on August 18th, 2025 at 3:32pm MDT