

\$509,900 - 842 Rowan Close, Edmonton

MLS® #E4452059

\$509,900

3 Bedroom, 2.50 Bathroom, 1,707 sqft

Single Family on 0.00 Acres

The Orchards At Ellerslie, Edmonton, AB

This beautifully designed home offers style, space, and over \$25,000 in thoughtful upgrades—perfect for modern living or future investment. Featuring upgraded 9” foundation walls and a convenient side entrance, this layout is ideal for families or buyers considering future suite development. The spice kitchen adds function and flexibility for everyday cooking, while the main kitchen and living area are open, bright, and built for entertaining. The home is suite-ready, with rough-ins for future development including two 220V plugs, plumbing for a kitchen, washer, and bathroom, plus heating rough-ins for both range and bath. Added touches like the upgraded paint-grade maple handrail with stylish metal spindles elevate the main floor’s modern appeal. Perfectly blending comfort and potential, this home is a standout choice for buyers looking for long-term value.



Built in 2025

Essential Information

MLS® #	E4452059
Price	\$509,900
Bedrooms	3
Bathrooms	2.50
Full Baths	2
Half Baths	1

Square Footage 1,707
Acres 0.00
Year Built 2025
Type Single Family
Sub-Type Detached Single Family
Style 2 Storey
Status Active

Community Information

Address 842 Rowan Close
Area Edmonton
Subdivision The Orchards At Ellerslie
City Edmonton
County ALBERTA
Province AB
Postal Code T6X 3J4

Amenities

Amenities See Remarks
Parking Parking Pad Cement/Paved

Interior

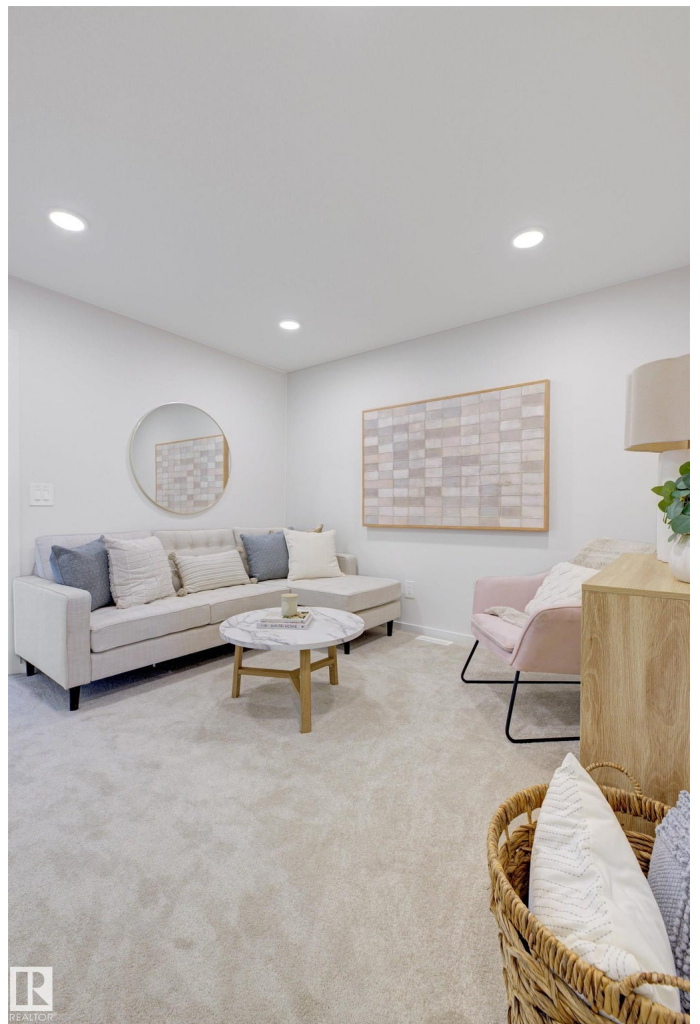
Interior Features ensuite bathroom
Appliances Hood Fan
Heating Forced Air-1, Natural Gas
Stories 2
Has Basement Yes
Basement Full, Unfinished

Exterior

Exterior Wood, Vinyl
Exterior Features See Remarks
Roof Asphalt Shingles
Construction Wood, Vinyl
Foundation Concrete Perimeter

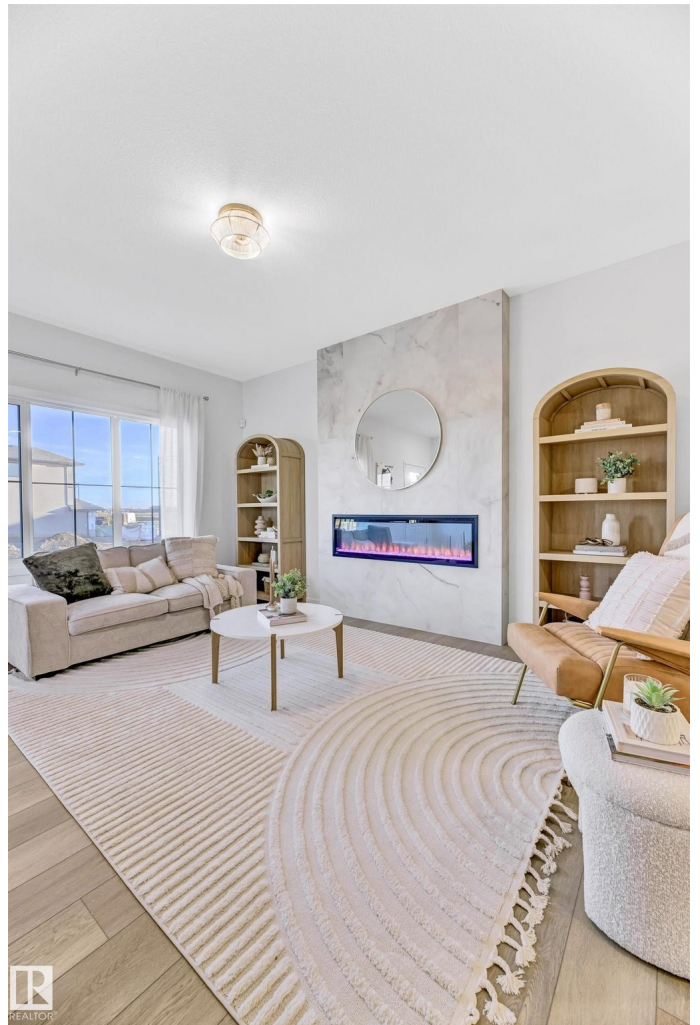
Additional Information

Date Listed August 8th, 2025
Days on Market 40



Zoning

Zone 53



DATA IS DEEMED RELIABLE BUT IS NOT GUARANTEED ACCURATE BY THE REALTORS® ASSOCIATION OF EDMONTON. COPYRIGHT 2025 BY THE REALTORS® ASSOCIATION OF EDMONTON. ALL RIGHTS RESERVED. Trademarks are owned or controlled by the Canadian Real Estate Association (CREA) and identify real estate professionals who are members of CREA (REALTOR®, REALTORS®) and/or the quality of services they provide (MLS®, Multiple Listing Service®)

Listing information last updated on September 17th, 2025 at 3:18pm MDT