

\$200,000 - 331 344 Windermere Road, Edmonton

MLS® #E4450833

\$200,000

1 Bedroom, 2.00 Bathroom, 721 sqft
Condo / Townhouse on 0.00 Acres

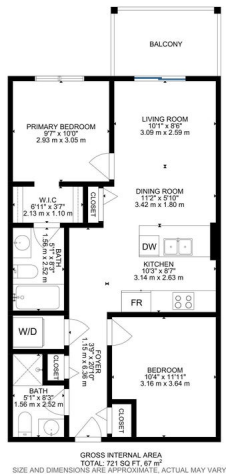
Windermere, Edmonton, AB

Welcome to this beautifully maintained 1 bedroom + den unit in the well-managed Elements at Windermere. Inside, you'll appreciate the pride of ownership throughout. The kitchen features sleek black appliances and plenty of cabinetry, seamlessly connecting to the open-concept living and dining area—perfect for entertaining or relaxing. The spacious primary bedroom includes a 4-piece ensuite, while the versatile den can easily function as a second bedroom or generous home office. Enjoy your morning coffee or evening BBQs on the private patio. Additional highlights include in-suite laundry, a second 3-piece bathroom, and titled heated underground parking—ideal for Edmonton winters. Located just steps from top amenities including schools, daycares, shopping, restaurants, grocery stores, banks, and a cinema. This location truly offers convenience and comfort in one stylish package!

Built in 2014

Essential Information

MLS® #	E4450833
Price	\$200,000
Bedrooms	1
Bathrooms	2.00
Full Baths	2



GROSS INTERNAL AREA
TOTAL: 721 SQ. FT. 67 m²
SIZE AND DIMENSIONS ARE APPROXIMATE, ACTUAL MAY VARY

Square Footage	721
Acres	0.00
Year Built	2014
Type	Condo / Townhouse
Sub-Type	Lowrise Apartment
Style	Single Level Apartment
Status	Active

Community Information

Address	331 344 Windermere Road
Area	Edmonton
Subdivision	Windermere
City	Edmonton
County	ALBERTA
Province	AB
Postal Code	T6W 2P2

Amenities

Amenities	Carbon Monoxide Detectors, Deck, Detectors Smoke, No Animal Home, No Smoking Home, Parking-Visitor
Parking Spaces	1
Parking	Underground

Interior

Interior Features	ensuite bathroom
Appliances	Dishwasher-Built-In, Microwave Hood Fan, Refrigerator, Stacked Washer/Dryer, Stove-Electric, Window Coverings
Heating	Baseboard, Natural Gas
# of Stories	4
Stories	1
Has Basement	Yes
Basement	None, No Basement

Exterior

Exterior	Wood, Vinyl
Exterior Features	Golf Nearby, Public Swimming Pool, Public Transportation, Schools, Shopping Nearby
Roof	Asphalt Shingles
Construction	Wood, Vinyl

Foundation Concrete Perimeter

School Information

Elementary Constable Daniel Woodall S
Middle St.John XXIII School
High Lillian Osborne High Schoo

Additional Information

Date Listed August 1st, 2025
Days on Market 1
Zoning Zone 56
Condo Fee \$469

DATA IS DEEMED RELIABLE BUT IS NOT GUARANTEED ACCURATE BY THE REALTORS® ASSOCIATION OF EDMONTON. COPYRIGHT 2025 BY THE REALTORS® ASSOCIATION OF EDMONTON. ALL RIGHTS RESERVED.Trademarks are owned or controlled by the Canadian Real Estate Association (CREA) and identify real estate professionals who are members of CREA (REALTOR®, REALTORS®) and/or the quality of services they provide (MLS®, Multiple Listing Service®)
Listing information last updated on August 2nd, 2025 at 2:02pm MDT