

\$477,500 - 8021 223 Street, Edmonton

MLS® #E4450819

\$477,500

3 Bedroom, 2.50 Bathroom, 1,725 sqft

Single Family on 0.00 Acres

Rosenthal (Edmonton), Edmonton, AB

Welcome to this stunning 3-bedroom townhome in the vibrant west Edmonton community of Rosenthal! Enjoy open concept living with modern fixtures, a bright and airy main floor, and a spacious kitchen featuring a massive eat-up island, sleek finishes, and a convenient walk-through pantry. The dining area flows into the sunlit living room, and a 2-piece bath completes the main level. Upstairs, youâ€™ll find a versatile open bonus room, a spacious primary retreat with a 3-piece ensuite and walk-in closet, plus two additional generous-sized bedrooms, a 4-piece bath, and upper floor laundry. Step outside to a large backyard with a massive composite deckâ€”perfect for relaxing or entertaining, a double attached garage and a SEPARATE ENTRANCE! Rosenthal offers scenic walking trails, a spray park, schools, shopping, and easy access to major roadways. Itâ€™s the perfect family-friendly neighbourhood to call home. SOME PHOTOS ARE VIRTUALLY STAGED

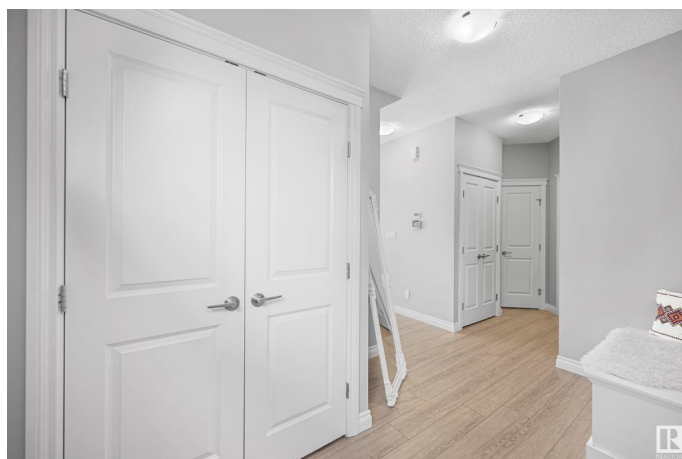
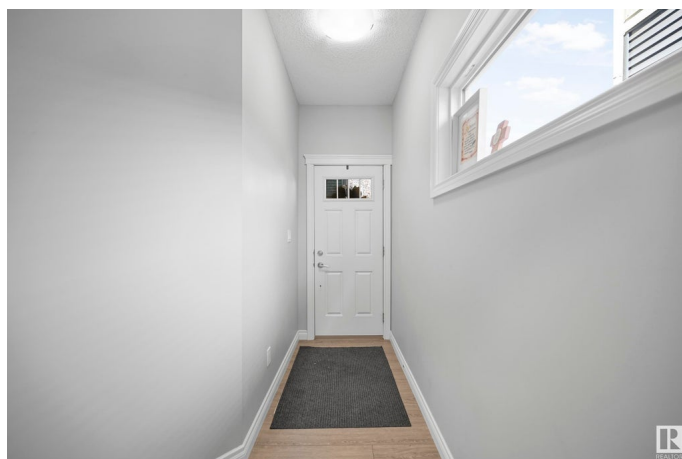
Built in 2019

Essential Information

MLS® # E4450819

Price \$477,500

Bedrooms 3



Bathrooms	2.50
Full Baths	2
Half Baths	1
Square Footage	1,725
Acres	0.00
Year Built	2019
Type	Single Family
Sub-Type	Half Duplex
Style	2 Storey
Status	Active

Community Information

Address	8021 223 Street
Area	Edmonton
Subdivision	Rosenthal (Edmonton)
City	Edmonton
County	ALBERTA
Province	AB
Postal Code	T5T 7H9

Amenities

Amenities	Ceiling 9 ft., Closet Organizers, Deck
Parking Spaces	4
Parking	Double Garage Attached

Interior

Interior Features	ensuite bathroom
Appliances	Dishwasher-Built-In, Dryer, Microwave Hood Fan, Refrigerator, Stove-Electric, Washer
Heating	Forced Air-1, Natural Gas
Stories	2
Has Basement	Yes
Basement	Full, Unfinished

Exterior

Exterior	Wood, Stone, Vinyl
Exterior Features	Golf Nearby, Playground Nearby, Public Transportation, Schools, Shopping Nearby, Partially Fenced
Roof	Asphalt Shingles

Construction	Wood, Stone, Vinyl
Foundation	Concrete Perimeter

School Information

Elementary	LaPerle School
Middle	Michael Phair School
High	Jasper Place School

Additional Information

Date Listed	August 1st, 2025
Days on Market	1
Zoning	Zone 58
HOA Fees	121.66
HOA Fees Freq.	Annually

DATA IS DEEMED RELIABLE BUT IS NOT GUARANTEED ACCURATE BY THE REALTORS® ASSOCIATION OF EDMONTON. COPYRIGHT 2025 BY THE REALTORS® ASSOCIATION OF EDMONTON. ALL RIGHTS RESERVED.Trademarks are owned or controlled by the Canadian Real Estate Association (CREA) and identify real estate professionals who are members of CREA (REALTOR®, REALTORS®) and/or the quality of services they provide (MLS®, Multiple Listing Service®)

Listing information last updated on August 2nd, 2025 at 4:32pm MDT