

\$649,900 - 8416 160a Avenue, Edmonton

MLS® #E4448162

\$649,900

5 Bedroom, 3.50 Bathroom, 2,394 sqft

Single Family on 0.00 Acres

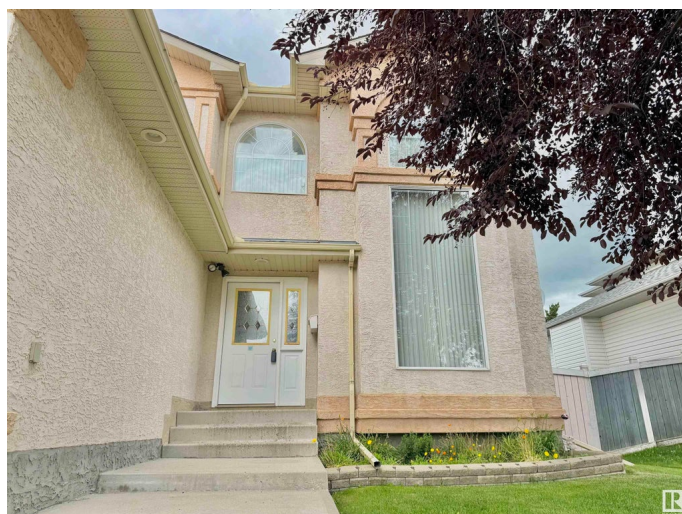
Belle Rive, Edmonton, AB

Discover this beautifully maintained 1999 custom-built 2-storey home in the desirable community of Belle Rive, offering over 3,600 sq.ft. of living space including a fully finished basement and an attached double garage. Situated on an oversized, landscaped lot with underground sprinklers and a spacious backyard deck, it's™ perfect for outdoor living. Inside, you're™ welcomed by soaring 17'™ ceilings and abundant natural light. The main floor features 9'™ ceilings, an open-concept kitchen, two dining areas, two living rooms, a bedroom, and a half bath. Upstairs offers three large bedrooms, including a primary suite with ensuite, a second full bath, and a bonus room overlooking the main floor. The basement adds a huge rec room, fifth bedroom, full bath, laundry, and ample storage. Conveniently located near parks, schools, shopping, and amenities, this is the ideal home for a growing or multi-generational family.

Built in 1999

Essential Information

MLS® #	E4448162
Price	\$649,900
Bedrooms	5
Bathrooms	3.50



Full Baths	3
Half Baths	1
Square Footage	2,394
Acres	0.00
Year Built	1999
Type	Single Family
Sub-Type	Detached Single Family
Style	2 Storey
Status	Active

Community Information

Address	8416 160a Avenue
Area	Edmonton
Subdivision	Belle Rive
City	Edmonton
County	ALBERTA
Province	AB
Postal Code	T5Z 3K2

Amenities

Amenities	Air Conditioner, Ceiling 9 ft., Deck, Hot Water Natural Gas, No Animal Home, No Smoking Home, Sprinkler Sys-Underground
Parking	Double Garage Attached

Interior

Interior Features	ensuite bathroom
Appliances	Air Conditioning-Central, Dishwasher-Built-In, Dryer, Garage Control, Garage Opener, Hood Fan, Storage Shed, Stove-Electric, Washer, Window Coverings, Refrigerators-Two
Heating	Forced Air-1, Natural Gas
Fireplace	Yes
Fireplaces	Glass Door
Stories	3
Has Basement	Yes
Basement	Full, Finished

Exterior

Exterior	Wood, Stucco
Exterior Features	Fenced, Flat Site, Fruit Trees/Shrubs, Landscaped, Playground Nearby,

	Schools, Shopping Nearby
Roof	Asphalt Shingles
Construction	Wood, Stucco
Foundation	Concrete Perimeter

School Information

Elementary	FLORENCE HALLOCK SCHOOL
Middle	FLORENCE HALLOCK SCHOOL
High	QUEEN ELIZABETH SCHOOL

Additional Information

Date Listed	July 16th, 2025
Days on Market	15
Zoning	Zone 28

DATA IS DEEMED RELIABLE BUT IS NOT GUARANTEED ACCURATE BY THE REALTORS® ASSOCIATION OF EDMONTON. COPYRIGHT 2025 BY THE REALTORS® ASSOCIATION OF EDMONTON. ALL RIGHTS RESERVED. Trademarks are owned or controlled by the Canadian Real Estate Association (CREA) and identify real estate professionals who are members of CREA (REALTOR®, REALTORS®) and/or the quality of services they provide (MLS®, Multiple Listing Service®)

Listing information last updated on July 31st, 2025 at 3:33pm MDT