

\$249,900 - 706 2510 109 Street, Edmonton

MLS® #E4447914

\$249,900

1 Bedroom, 1.00 Bathroom, 754 sqft

Condo / Townhouse on 0.00 Acres

Ermineskin, Edmonton, AB

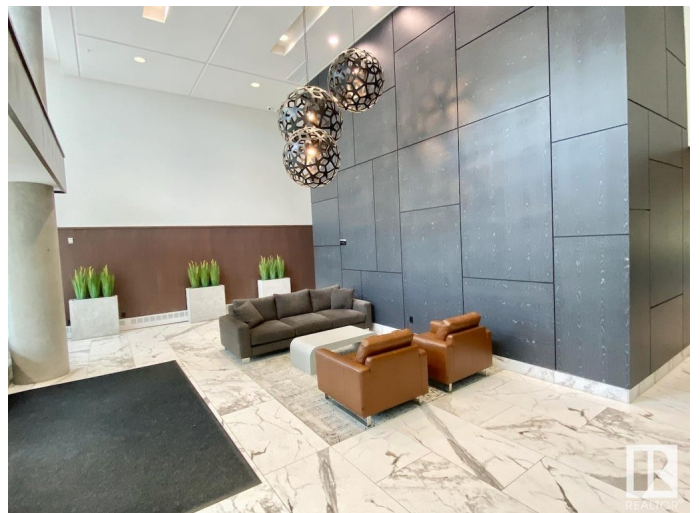
PENTHOUSE (TOP FLOOR) 1 BED 1 BATH CONDO WITH TITLED UNDERGROUND PARKING & STORAGE!! CONDO FEES INCLUDES ALL UTILITIES, AND GYM ACCESS! This FULLY FURNISHED condo is sure to please with its modern style, open concept, 9.5-11ft CEILINGS, massive windows and IN-SUITE LAUNDRY! This unit has the perfect space to relax or entertain. The kitchen features stainless steel appliances, gas cooktop, built-in oven, large island, and granite countertops/backsplash. The living room boasts a gas fireplace and access to your private, north-facing balcony, overlooking the city skyline! The primary bedroom features a walk-through closet with jack and jill access to the luxury 4-piece bath with the deep built in soaker tub, and glass framed walk-in shower. Solid building (concrete construction for less noise) and well managed! Only steps to shops, restaurants, and CENTURY LRT!! This location offers a quick commute to the U of A or downtown. Don't miss out on this immaculate unit!

Built in 2008

Essential Information

MLS® # E4447914

Price \$249,900



Bedrooms	1
Bathrooms	1.00
Full Baths	1
Square Footage	754
Acres	0.00
Year Built	2008
Type	Condo / Townhouse
Sub-Type	Apartment High Rise
Style	Single Level Apartment
Status	Active

Community Information

Address	706 2510 109 Street
Area	Edmonton
Subdivision	Ermineskin
City	Edmonton
County	ALBERTA
Province	AB
Postal Code	T6J 2X1

Amenities

Amenities	Air Conditioner, Ceiling 10 ft., Ceiling 9 ft., Deck, Exercise Room, Parking-Visitor, Storage-Locker Room
Parking	Underground

Interior

Interior Features	ensuite bathroom
Appliances	Dishwasher-Built-In, Microwave Hood Fan, Oven-Built-In, Refrigerator, Stacked Washer/Dryer, Stove-Countertop Gas
Heating	Heat Pump, Natural Gas
Fireplace	Yes
Fireplaces	Tile Surround
# of Stories	7
Stories	1
Has Basement	Yes
Basement	None, No Basement

Exterior

Exterior	Concrete, Brick, Metal
----------	------------------------

Exterior Features	Schools, Shopping Nearby, View City
Roof	Concrete Tiles
Construction	Concrete, Brick, Metal
Foundation	Concrete Perimeter

Additional Information

Date Listed	July 15th, 2025
Days on Market	21
Zoning	Zone 16
Condo Fee	\$711

DATA IS DEEMED RELIABLE BUT IS NOT GUARANTEED ACCURATE BY THE REALTORS® ASSOCIATION OF EDMONTON. COPYRIGHT 2025 BY THE REALTORS® ASSOCIATION OF EDMONTON. ALL RIGHTS RESERVED.Trademarks are owned or controlled by the Canadian Real Estate Association (CREA) and identify real estate professionals who are members of CREA (REALTOR®, REALTORS®) and/or the quality of services they provide (MLS®, Multiple Listing Service®)

Listing information last updated on August 5th, 2025 at 4:02am MDT