

## \$229,900 - 10317 132 Avenue, Edmonton

MLS® #E4446160

**\$229,900**

3 Bedroom, 2.00 Bathroom, 1,263 sqft

Single Family on 0.00 Acres

Lauderdale, Edmonton, AB

Gorgeous Home offers elegance, magnificent living spaces. This home features 1263 SQFT, 3 bed and 2 Full baths. Stunning curb appeal with vinyl exterior. Inside the front entry boasts an impressive living area. The Chef's Kitchen is outstanding from every angle, showcases tasteful finishes, custom cabinetry. A Sunroom off of the kitchen adds to the footprint of the home. 3 large bedrooms, Full Bathroom with a gorgeous Master Suite. The Finished Basement is perfect for entertaining with a Large Living Room, bathroom and a Large Laundry Room. Upgrade's include: Kitchen, Bedroom Windows, Vinyl Siding, Roof, Tank. The South Facing back yard boasts a private partially covered patio, offers plenty of space, great for entertaining. The Front has direct access to a school field. Plenty of visitor parking on the sides and quick walking distance to the unit. NO CONDO FEE's. In a Great Location close to abundance of schools, playgrounds, shopping centres and public transport

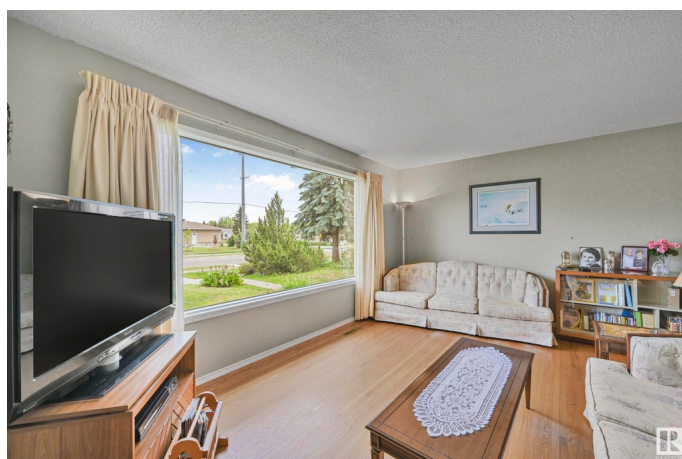
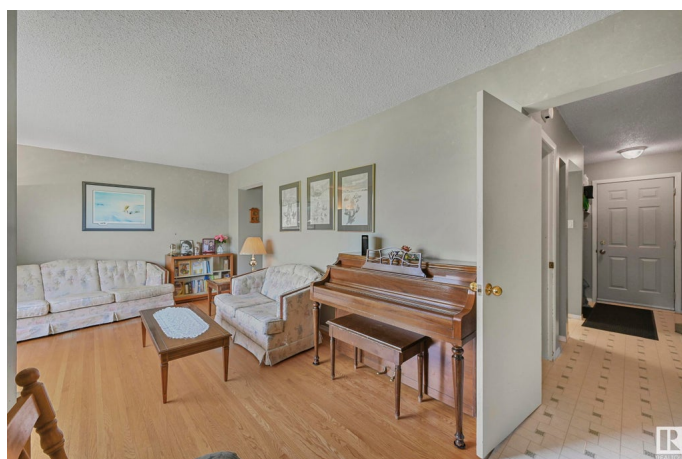
Built in 1961

### Essential Information

MLS® # E4446160

Price \$229,900

Bedrooms 3



Bathrooms	2.00
Full Baths	2
Square Footage	1,263
Acres	0.00
Year Built	1961
Type	Single Family
Sub-Type	Residential Attached
Style	2 Storey
Status	Active

### Community Information

Address	10317 132 Avenue
Area	Edmonton
Subdivision	Lauderdale
City	Edmonton
County	ALBERTA
Province	AB
Postal Code	T5E 0Y8

### Amenities

Amenities	See Remarks
Parking	Single Garage Detached

### Interior

Appliances	Dishwasher-Built-In, Dryer, Freezer, Garage Opener, Refrigerator, Stove-Electric, Washer, Window Coverings
Heating	Forced Air-1, Natural Gas
Stories	3
Has Basement	Yes
Basement	Full, Finished

### Exterior

Exterior	Wood, Vinyl
Exterior Features	Fenced, Public Swimming Pool, Public Transportation, Schools, Shopping Nearby
Roof	Tar & Gravel
Construction	Wood, Vinyl
Foundation	Concrete Perimeter

### Additional Information

Date Listed July 4th, 2025

Days on Market 3

Zoning Zone 01

DATA IS DEEMED RELIABLE BUT IS NOT GUARANTEED ACCURATE BY THE REALTORS® ASSOCIATION OF EDMONTON. COPYRIGHT 2025 BY THE REALTORS® ASSOCIATION OF EDMONTON. ALL RIGHTS RESERVED. Trademarks are owned or controlled by the Canadian Real Estate Association (CREA) and identify real estate professionals who are members of CREA (REALTOR®, REALTORS®) and/or the quality of services they provide (MLS®, Multiple Listing Service®)

Listing information last updated on July 7th, 2025 at 1:02am MDT