

Courtesy Of Tony T Estephan Of RE/MAX Elite

\$399,900 - 11434 Tower Road, Edmonton

MLS® #E4443440

\$399,900

3 Bedroom, 2.00 Bathroom, 1,290 sqft
Single Family on 0.00 Acres

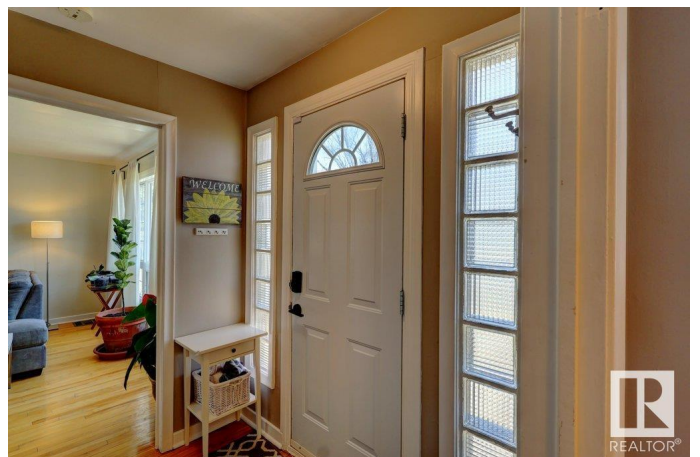
Prince Rupert, Edmonton, AB

This charming & well-maintained semi-bungalow is the perfect opportunity for homeowners & investors alike! Built in 1949, this character home offers both charm & modern updates, making it ideal for immediate occupancy or strong rental potential. Discover a spacious & functional layout featuring 2 large bedrooms upstairs & a main floor boasting a bright & expansive living room on one side & an open-concept dining & kitchen area on the other. The basement is finished with a spacious rec room, a 3rd bedroom, a 3 piece bath & designated laundry room. Some Features include, a newer Metal roof, newer front steps, vinyl windows a massive fully fenced yard. Steps from NAIT, KINGSWAY Mall & Royal Alexandra hospital. Located down the street from the Alberta Aviation Museum & Superstore. DOWNTOWN is a 10 min drive with easy access to public transit as well as short distance to the KINGSWAY/ROYAL ALEX LRT station.

Built in 1949

Essential Information

MLS® #	E4443440
Price	\$399,900
Bedrooms	3
Bathrooms	2.00



Full Baths	2
Square Footage	1,290
Acres	0.00
Year Built	1949
Type	Single Family
Sub-Type	Detached Single Family
Style	1 and Half Storey
Status	Active

Community Information

Address	11434 Tower Road
Area	Edmonton
Subdivision	Prince Rupert
City	Edmonton
County	ALBERTA
Province	AB
Postal Code	T5G 0Y8

Amenities

Amenities	On Street Parking, Deck, No Animal Home, No Smoking Home, Vinyl Windows
Parking	No Garage

Interior

Appliances	Dishwasher-Built-In, Dryer, Oven-Microwave, Refrigerator, Storage Shed, Stove-Electric, Washer, Window Coverings, See Remarks
Heating	Forced Air-1, Natural Gas
Stories	3
Has Basement	Yes
Basement	Full, Finished

Exterior

Exterior	Wood, Vinyl
Exterior Features	Back Lane, Fruit Trees/Shrubs, Playground Nearby, Public Transportation, Schools, Shopping Nearby
Roof	Metal
Construction	Wood, Vinyl
Foundation	Concrete Perimeter

Additional Information

Date Listed June 20th, 2025

Days on Market 14

Zoning Zone 08

DATA IS DEEMED RELIABLE BUT IS NOT GUARANTEED ACCURATE BY THE REALTORS® ASSOCIATION OF EDMONTON. COPYRIGHT 2025 BY THE REALTORS® ASSOCIATION OF EDMONTON. ALL RIGHTS RESERVED. Trademarks are owned or controlled by the Canadian Real Estate Association (CREA) and identify real estate professionals who are members of CREA (REALTOR®, REALTORS®) and/or the quality of services they provide (MLS®, Multiple Listing Service®)

Listing information last updated on July 3rd, 2025 at 10:47pm MDT