

\$594,900 - 3720 32 Street, Edmonton

MLS® #E4441279

\$594,900

5 Bedroom, 3.50 Bathroom, 1,837 sqft

Single Family on 0.00 Acres

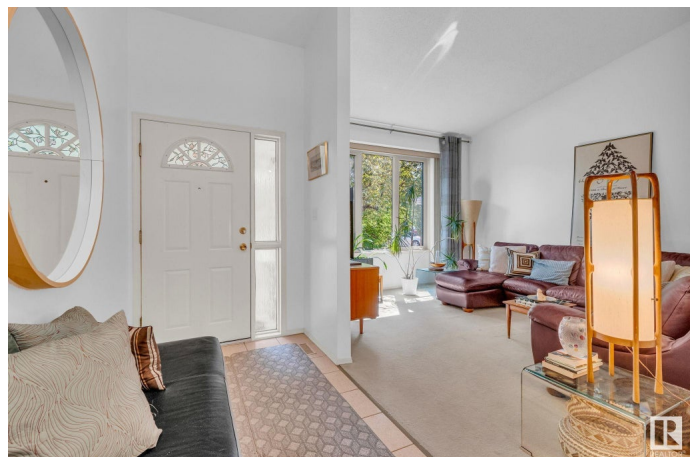
Wild Rose, Edmonton, AB

Discover this exceptional two-storey walkout home backing onto serene green space and Meadowbrook Lake. Situated on a beautifully landscaped, large pie-shaped lot with a vegetable garden, this home offers incredible outdoor living with a spacious west-facing elevated deck and a covered paved patio below. The main floor is perfect for entertaining with a formal dining room, cozy family room with fireplace, inviting living room, and a functional kitchen with an eating nook. Flooded with natural light throughout, this home features five bedrooms, including two in the fully developed basement, which also includes a second family room, a large storage area, and a utility room plumbed with water and offering direct access to the waterproof walkout patio. Additional features include air conditioning, an air filtration system, humidifier, updated attic insulation and a newer Trex deck with sleek glass railsâ€”making this home as efficient as it is inviting.

Built in 1989

Essential Information

MLS® #	E4441279
Price	\$594,900
Bedrooms	5
Bathrooms	3.50



Full Baths	3
Half Baths	1
Square Footage	1,837
Acres	0.00
Year Built	1989
Type	Single Family
Sub-Type	Detached Single Family
Style	2 Storey
Status	Active

Community Information

Address	3720 32 Street
Area	Edmonton
Subdivision	Wild Rose
City	Edmonton
County	ALBERTA
Province	AB
Postal Code	T6T 1G1

Amenities

Amenities	Air Conditioner, Deck, Walkout Basement
Parking	Double Garage Attached
Is Waterfront	Yes

Interior

Interior Features	ensuite bathroom
Appliances	Air Conditioning-Central, Dishwasher-Built-In, Dryer, Garage Control, Garage Opener, Hood Fan, Refrigerator, Washer, Window Coverings
Heating	Forced Air-2, Natural Gas
Fireplace	Yes
Fireplaces	Brick Facing
Stories	3
Has Basement	Yes
Basement	Full, Finished

Exterior

Exterior	Wood, Brick, Vinyl
Exterior Features	Backs Onto Lake, Backs Onto Park/Trees, Cul-De-Sac, Golf Nearby, Landscaped, Park/Reserve, Public Transportation, Schools, Shopping

	Nearby, View Lake
Roof	Asphalt Shingles
Construction	Wood, Brick, Vinyl
Foundation	Concrete Perimeter

Additional Information

Date Listed	June 9th, 2025
Days on Market	8
Zoning	Zone 30

DATA IS DEEMED RELIABLE BUT IS NOT GUARANTEED ACCURATE BY THE REALTORS® ASSOCIATION OF EDMONTON. COPYRIGHT 2025 BY THE REALTORS® ASSOCIATION OF EDMONTON. ALL RIGHTS RESERVED. Trademarks are owned or controlled by the Canadian Real Estate Association (CREA) and identify real estate professionals who are members of CREA (REALTOR®, REALTORS®) and/or the quality of services they provide (MLS®, Multiple Listing Service®)

Listing information last updated on June 17th, 2025 at 11:47am MDT