

\$499,499 - 8716 29 Avenue, Edmonton

MLS® #E4441113

\$499,499

6 Bedroom, 2.00 Bathroom, 1,081 sqft
Single Family on 0.00 Acres

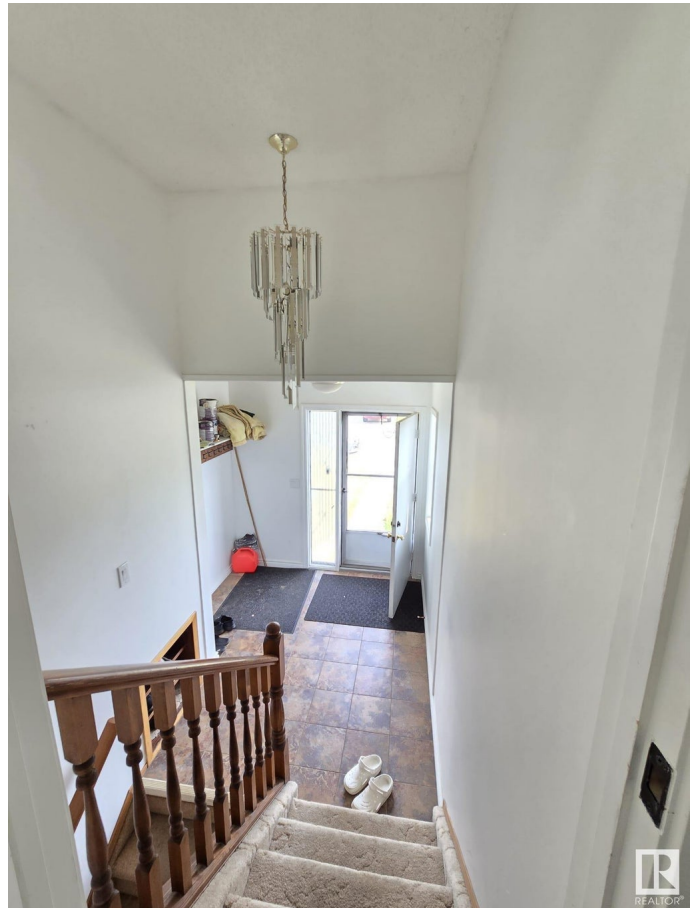
Tipaskan, Edmonton, AB

Welcome to this exquisite bi-level home nestled in the serene neighborhood of Tipaskan. This residence boasts a compact U-shaped kitchen, complete with built-in china cabinets, and offers versatile space that can be tailored to your needs, whether as a bedroom or dining area. The entry level features a bright living room, 2 cozy carpeted bedrooms, and a modern 3-piece bath with a walk-in shower. A sunlit room overlooking the backyard serves as an ideal office or laundry area. Venture to the lower level, where you will find a SECOND kitchen, a welcoming living room with elegant French doors (perfect as a 3rd bedroom), and 2 additional bedrooms, along with utility storage and oversized 3-piece bath. Step outside to enjoy the tranquility of your private, fenced yard, complemented by a heated double detached garage, which includes extra storage space and ample RV parking. Recent upgrades enhance this home's appeal: new shingles, a remodeled main/basement bath, fresh paint, new vinyl flooring, jacked garage.

Built in 1977

Essential Information

MLS® #	E4441113
Price	\$499,499



Bedrooms	6
Bathrooms	2.00
Full Baths	2
Square Footage	1,081
Acres	0.00
Year Built	1977
Type	Single Family
Sub-Type	Detached Single Family
Style	Bi-Level
Status	Active

Community Information

Address	8716 29 Avenue
Area	Edmonton
Subdivision	Tipaskan
City	Edmonton
County	ALBERTA
Province	AB
Postal Code	T6K 2X6

Amenities

Amenities	On Street Parking, Deck, Detectors Smoke, Hot Water Natural Gas, No Animal Home, No Smoking Home, R.V. Storage, Sunroom, Vinyl Windows, See Remarks
Parking	Double Garage Detached

Interior

Appliances	Dishwasher-Built-In, Hood Fan, Storage Shed, Window Coverings, Dryer-Two, Refrigerators-Two, Stoves-Two, Washers-Two
Heating	Forced Air-1, Natural Gas
Fireplace	Yes
Fireplaces	Brick Facing
Stories	2
Has Suite	Yes
Has Basement	Yes
Basement	Full, Finished

Exterior

Exterior	Wood, Metal, Stucco
----------	---------------------

Exterior Features	Back Lane, Fenced, Flat Si Playground Nearby, Public Schools, Shopping Nearby
Roof	Asphalt Shingles
Construction	Wood, Metal, Stucco
Foundation	Concrete Perimeter

Additional Information

Date Listed	June 7th, 2025
Days on Market	59
Zoning	Zone 29



DATA IS DEEMED RELIABLE BUT IS NOT GUARANTEED ACCURATE BY THE REALTORS® ASSOCIATION OF EDMONTON. COPYRIGHT 2025 BY THE REALTORS® ASSOCIATION OF EDMONTON. ALL RIGHTS RESERVED.Trademarks are owned or controlled by the Canadian Real Estate Association (CREA) and identify real estate professionals who are members of CREA (REALTOR®, REALTORS®) and/or the quality of services they provide (MLS®, Multiple Listing Service®)

Listing information last updated on August 5th, 2025 at 10:18am MDT