

## \$305,000 - 13212 128 Avenue, Edmonton

MLS® #E4440810

**\$305,000**

5 Bedroom, 2.00 Bathroom, 1,119 sqft

Single Family on 0.00 Acres

Athlone, Edmonton, AB

Big Bi-Level on a big lot in Athlone, solid fixer upper special or an amazing lot across from a greenspace. Double Detached garage. 5 Bedrooms, 2 baths, almost all original finishing throughout.

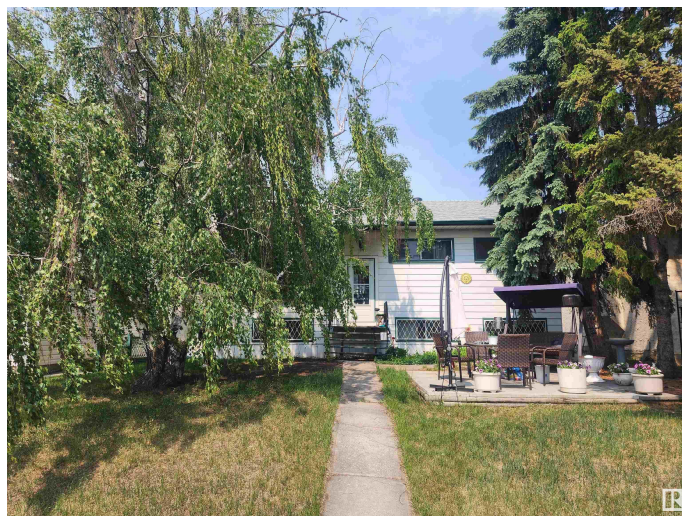
Built in 1957

### Essential Information

MLS® #	E4440810
Price	\$305,000
Bedrooms	5
Bathrooms	2.00
Full Baths	2
Square Footage	1,119
Acres	0.00
Year Built	1957
Type	Single Family
Sub-Type	Detached Single Family
Style	Bi-Level
Status	Active

### Community Information

Address	13212 128 Avenue
Area	Edmonton
Subdivision	Athlone
City	Edmonton
County	ALBERTA



Province	AB
Postal Code	T5L 3H2

### **Amenities**

Amenities	See Remarks
Parking Spaces	4
Parking	Double Garage Detached

### **Interior**

Appliances	Fan-Ceiling, Refrigerator, Stove-Electric, Window Coverings
Heating	Forced Air-1, Natural Gas
Stories	2
Has Basement	Yes
Basement	Full, Finished

### **Exterior**

Exterior	Wood, Metal
Exterior Features	See Remarks
Roof	Asphalt Shingles
Construction	Wood, Metal
Foundation	Concrete Perimeter

### **Additional Information**

Date Listed	June 6th, 2025
Days on Market	11
Zoning	Zone 01

DATA IS DEEMED RELIABLE BUT IS NOT GUARANTEED ACCURATE BY THE REALTORS® ASSOCIATION OF EDMONTON. COPYRIGHT 2025 BY THE REALTORS® ASSOCIATION OF EDMONTON. ALL RIGHTS RESERVED.Trademarks are owned or controlled by the Canadian Real Estate Association (CREA) and identify real estate professionals who are members of CREA (REALTOR®, REALTORS®) and/or the quality of services they provide (MLS®, Multiple Listing Service®)

Listing information last updated on June 17th, 2025 at 8:47pm MDT