

# \$845,000 - 22 Eldridge Point(e), St. Albert

MLS® #E4440158

**\$845,000**

5 Bedroom, 5.00 Bathroom, 2,392 sqft  
Single Family on 0.00 Acres

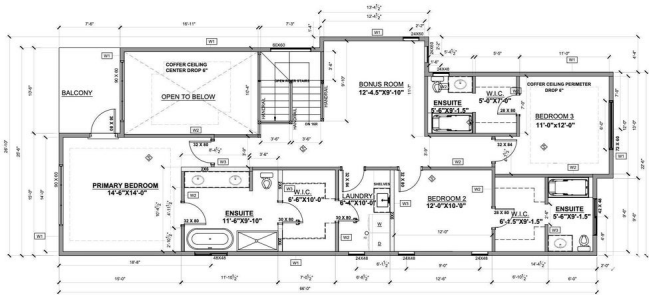
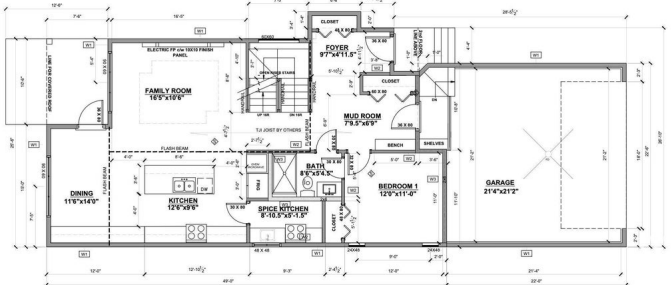
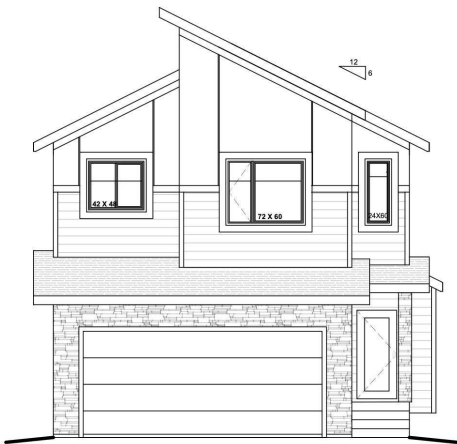
Erin Ridge North, St. Albert, AB

Beautiful 2-storey walkout home backing onto a peaceful pond with stunning sunset views and access to scenic walking paths. Three covered outdoor spaces—off the dining room, primary suite, and ground-level patio. Main floor features an open-concept kitchen, spacious living/dining areas, and a bedroom with an adjacent full bath—perfect for guests or a home office. Upstairs offers 3 bedrooms including a luxurious primary suite with a spa-inspired ensuite: soaker tub, oversized shower, double vanity, and private walk-in closet. Each upstairs bedroom has access to a full bathroom. The finished walkout basement includes a second full kitchen, family room with wet bar, games area, and a 5th bedroom. Oversized garage and close to schools, parks, shopping, and major roads. Ideal for families or multi-generational living!

Built in 2025

## Essential Information

|                |           |
|----------------|-----------|
| MLS® #         | E4440158  |
| Price          | \$845,000 |
| Bedrooms       | 5         |
| Bathrooms      | 5.00      |
| Full Baths     | 5         |
| Square Footage | 2,392     |
| Acres          | 0.00      |



|            |                        |
|------------|------------------------|
| Year Built | 2025                   |
| Type       | Single Family          |
| Sub-Type   | Detached Single Family |
| Style      | 2 Storey               |
| Status     | Active                 |

### **Community Information**

|             |                      |
|-------------|----------------------|
| Address     | 22 Eldridge Point(e) |
| Area        | St. Albert           |
| Subdivision | Erin Ridge North     |
| City        | St. Albert           |
| County      | ALBERTA              |
| Province    | AB                   |
| Postal Code | T8N 7Z9              |

### **Amenities**

|               |  |
|---------------|--|
| Amenities     | Ceiling 9 ft., Walkout Basement, Wet Bar, 9 ft. Basement Ceiling |
| Parking       | Double Garage Attached   |
| Is Waterfront | Yes  |

### **Interior**

|                   |                           |
|-------------------|---------------------------|
| Interior Features | ensuite bathroom          |
| Appliances        | See Remarks               |
| Heating           | Forced Air-1, Natural Gas |
| Stories           | 3                         |
| Has Basement      | Yes                       |
| Basement          | Full, Finished            |

### **Exterior**

|                   |   |
|-------------------|---|
| Exterior          | Wood, Vinyl   |
| Exterior Features | Backs Onto Lake, Golf Nearby, Playground Nearby, Schools, Shopping Nearby |
| Roof              | Asphalt Shingles  |
| Construction      | Wood, Vinyl   |
| Foundation        | Concrete Perimeter  |

### **Additional Information**

|                |                |
|----------------|----------------|
| Date Listed    | June 3rd, 2025 |
| Days on Market | 79             |

## Zoning

## Zone 24

DATA IS DEEMED RELIABLE BUT IS NOT GUARANTEED ACCURATE BY THE REALTORS® ASSOCIATION OF EDMONTON. COPYRIGHT 2025 BY THE REALTORS® ASSOCIATION OF EDMONTON. ALL RIGHTS RESERVED. Trademarks are owned or controlled by the Canadian Real Estate Association (CREA) and identify real estate professionals who are members of CREA (REALTOR®, REALTORS®) and/or the quality of services they provide (MLS®, Multiple Listing Service®)

Listing information last updated on August 21st, 2025 at 8:02pm MDT