

\$334,000 - 11166 83 Avenue, Edmonton

MLS® #E4439488

\$334,000

2 Bedroom, 1.50 Bathroom, 1,192 sqft
Condo / Townhouse on 0.00 Acres

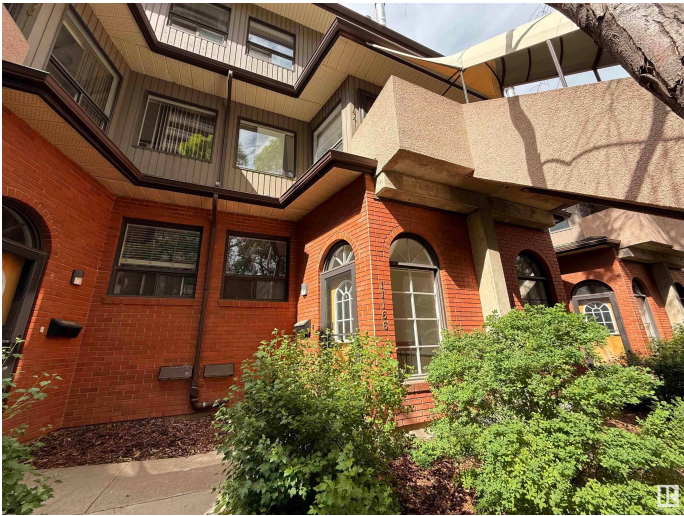
Garneau, Edmonton, AB

Charming 2-storey townhome in Garneau, just steps from the U of A, Stollery Hospital, LRT, shopping, restaurants, and vibrant Whyte Ave! This 2-bed + den home features hardwood floors, vaulted ceilings, and large windows that flood the space with natural lightâ€”perfect for plant lovers. Enjoy a cozy wood-burning fireplace in the living room and the comfort of in-floor heating in the kitchen and bathroom. Ideal for students, professionals, or anyone seeking a walkable lifestyle in one of Edmontonâ€™s most sought-after neighborhoods. Plus, your vehicle stays protected year-round with secure parking. heated underground parkade. When spring returns, unwind and dine on the quaint patio at the back. This is a wonderful opportunity in a prime location!

Built in 1981

Essential Information

| | |
|----------------|-----------|
| MLS® # | E4439488 |
| Price | \$334,000 |
| Bedrooms | 2 |
| Bathrooms | 1.50 |
| Full Baths | 1 |
| Half Baths | 1 |
| Square Footage | 1,192 |
| Acres | 0.00 |



| | |
|------------|-------------------|
| Year Built | 1981 |
| Type | Condo / Townhouse |
| Sub-Type | Townhouse |
| Style | 2 Storey |
| Status | Active |

Community Information

| | |
|-------------|-----------------|
| Address | 11166 83 Avenue |
| Area | Edmonton |
| Subdivision | Garneau |
| City | Edmonton |
| County | ALBERTA |
| Province | AB |
| Postal Code | T6G 0V1 |

Amenities

| | |
|-----------|-----------------|
| Amenities | Detectors Smoke |
| Parking | Underground |

Interior

| | |
|--------------|--|
| Appliances | Dishwasher-Built-In, Dryer, Hood Fan, Refrigerator, Stove-Electric, Washer |
| Heating | Hot Water, See Remarks |
| Stories | 2 |
| Has Basement | Yes |
| Basement | None, No Basement |

Exterior

| | |
|-------------------|--------------------------------|
| Exterior | Wood, Brick |
| Exterior Features | Public Transportation, Schools |
| Roof | Asphalt Shingles |
| Construction | Wood, Brick |
| Foundation | Concrete Perimeter |

Additional Information

| | |
|----------------|----------------|
| Date Listed | May 30th, 2025 |
| Days on Market | 67 |
| Zoning | Zone 15 |
| Condo Fee | \$803 |

DATA IS DEEMED RELIABLE BUT IS NOT GUARANTEED ACCURATE BY THE REALTORS® ASSOCIATION OF EDMONTON. COPYRIGHT 2025 BY THE REALTORS® ASSOCIATION OF EDMONTON. ALL RIGHTS RESERVED.Trademarks are owned or controlled by the Canadian Real Estate Association (CREA) and identify real estate professionals who are members of CREA (REALTOR®, REALTORS®) and/or the quality of services they provide (MLS®, Multiple Listing Service®)

Listing information last updated on August 5th, 2025 at 7:02am MDT