

## \$535,000 - 2111 160 Street, Edmonton

MLS® #E4437974

**\$535,000**

3 Bedroom, 2.50 Bathroom, 1,674 sqft

Single Family on 0.00 Acres

Glenridding Ravine, Edmonton, AB

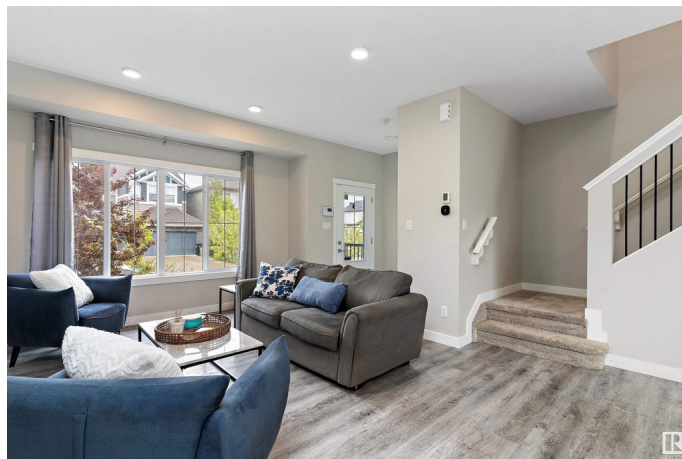
Welcome to this beautiful modern former Showhome in the desirable Glenridding Ravine community. Featuring 9â€™™ ceilings and a bright open-concept layout, this air-conditioned property offers the perfect blend of modern style and everyday comfort. The heart of the home is the chef-inspired kitchen, featuring built-in stainless steel appliances, gas cooktop, quartz countertops, and an oversized islandâ€”ideal for entertaining and family gatherings. Upstairs, youâ€™™ll find 3 spacious bedrooms, a convenient laundry room, and a luxurious primary suite complete with a large walk-in closet and a 5-piece ensuite featuring dual sinks, a soaker tub, and a separate shower. Step outside to a fully landscaped and fenced backyard, perfect for relaxing or hosting guests. A spacious double detached garage adds convenience and extra storage. This move-in ready home checks all the boxesâ€”luxury finishes, thoughtful design, and a prime location in a family-friendly neighborhood.

Built in 2018

### Essential Information

MLS® # E4437974

Price \$535,000



Bedrooms	3
Bathrooms	2.50
Full Baths	2
Half Baths	1
Square Footage	1,674
Acres	0.00
Year Built	2018
Type	Single Family
Sub-Type	Detached Single Family
Style	2 Storey
Status	Active

### Community Information

Address	2111 160 Street
Area	Edmonton
Subdivision	Glenridding Ravine
City	Edmonton
County	ALBERTA
Province	AB
Postal Code	T6W 4E5

### Amenities

Amenities	Air Conditioner, Ceiling 9 ft., Deck, Detectors Smoke, No Smoking Home
Parking	Double Garage Detached

### Interior

Interior Features	ensuite bathroom
Appliances	Air Conditioning-Central, Dishwasher-Built-In, Dryer, Garage Control, Garage Opener, Hood Fan, Oven-Built-In, Oven-Microwave, Refrigerator, Stove-Countertop Gas, Washer
Heating	Forced Air-1, Natural Gas
Fireplace	Yes
Fireplaces	Tile Surround
Stories	2
Has Basement	Yes
Basement	Full, Unfinished

### Exterior

Exterior	Wood, Stone, Vinyl
----------	--------------------

Exterior Features	Airport Nearby, Back Lane, Fenced, Flat Site, Golf Nearby, Landscaped, Playground Nearby, Shopping Nearby
Roof	Asphalt Shingles
Construction	Wood, Stone, Vinyl
Foundation	Concrete Perimeter

**Additional Information**

Date Listed	May 22nd, 2025
Days on Market	26
Zoning	Zone 56

DATA IS DEEMED RELIABLE BUT IS NOT GUARANTEED ACCURATE BY THE REALTORS® ASSOCIATION OF EDMONTON. COPYRIGHT 2025 BY THE REALTORS® ASSOCIATION OF EDMONTON. ALL RIGHTS RESERVED.Trademarks are owned or controlled by the Canadian Real Estate Association (CREA) and identify real estate professionals who are members of CREA (REALTOR®, REALTORS®) and/or the quality of services they provide (MLS®, Multiple Listing Service®)

Listing information last updated on June 17th, 2025 at 8:17pm MDT