

\$724,800 - 24 Edinburgh Court, St. Albert

MLS® #E4436465

\$724,800

4 Bedroom, 3.50 Bathroom, 2,183 sqft

Single Family on 0.00 Acres

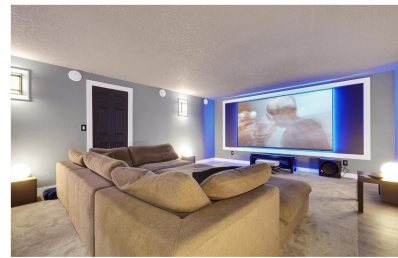
Erin Ridge North, St. Albert, AB

Get ready to fall in love! This impressive home has serious WOW factor & is located just 1 block from Lois Hole School. With over 3400 sq ft of beautifully finished living space, there's room for the whole family to spread out & enjoy. The bright & welcoming main floor features an office, spacious open-concept living/dining area & a dream kitchen complete with a huge island, eating bar & walk-through pantry. The mudroom off the double garage keeps things organized & there's a convenient 2-pce powder room for guests. Upstairs, you'll find 3 generous bedrooms, a versatile bonus room & a stunning primary suite w/spa-like ensuite & walk-in closet. The bsmt takes things to the next level w/a custom theatre room, entertainment zone, 4th bdrm & a 5 pce bath. Step outside to your private backyard oasis, featuring one of the best covered decks complete w/ fireplace & TV, it's the ultimate hangout spot. This home truly has it all - space, style, luxurious touches & located in a family oriented neighborhood!

Built in 2014

Essential Information

MLS® #	E4436465
Price	\$724,800
Bedrooms	4



Bathrooms	3.50
Full Baths	3
Half Baths	1
Square Footage	2,183
Acres	0.00
Year Built	2014
Type	Single Family
Sub-Type	Detached Single Family
Style	2 Storey
Status	Active

Community Information

Address	24 Edinburgh Court
Area	St. Albert
Subdivision	Erin Ridge North
City	St. Albert
County	ALBERTA
Province	AB
Postal Code	T8N 6M8

Amenities

Amenities	See Remarks
Parking Spaces	4
Parking	Double Garage Attached

Interior

Interior Features	ensuite bathroom
Appliances	Air Conditioning-Central, Dishwasher-Built-In, Garage Control, Garage Opener, Microwave Hood Fan, Refrigerator, Stove-Gas, Window Coverings, See Remarks, Dryer-Two, Washers-Two
Heating	Forced Air-1, Natural Gas
Fireplace	Yes
Fireplaces	See Remarks
Stories	3
Has Basement	Yes
Basement	Full, Finished

Exterior

Exterior	Wood, Stone, Vinyl
----------	--------------------

Exterior Features	Fenced, Fruit Trees/Shrubs, Landscaped, Playground Nearby, Public Transportation, Schools, Shopping Nearby
Roof	Asphalt Shingles
Construction	Wood, Stone, Vinyl
Foundation	Concrete Perimeter

Additional Information

Date Listed	May 14th, 2025
Days on Market	34
Zoning	Zone 24

DATA IS DEEMED RELIABLE BUT IS NOT GUARANTEED ACCURATE BY THE REALTORS® ASSOCIATION OF EDMONTON. COPYRIGHT 2025 BY THE REALTORS® ASSOCIATION OF EDMONTON. ALL RIGHTS RESERVED.Trademarks are owned or controlled by the Canadian Real Estate Association (CREA) and identify real estate professionals who are members of CREA (REALTOR®, REALTORS®) and/or the quality of services they provide (MLS®, Multiple Listing Service®)

Listing information last updated on June 17th, 2025 at 7:17am MDT