

\$409,900 - 1035 Moyer Drive, Sherwood Park

MLS® #E4435416

\$409,900

4 Bedroom, 2.00 Bathroom, 1,157 sqft

Single Family on 0.00 Acres

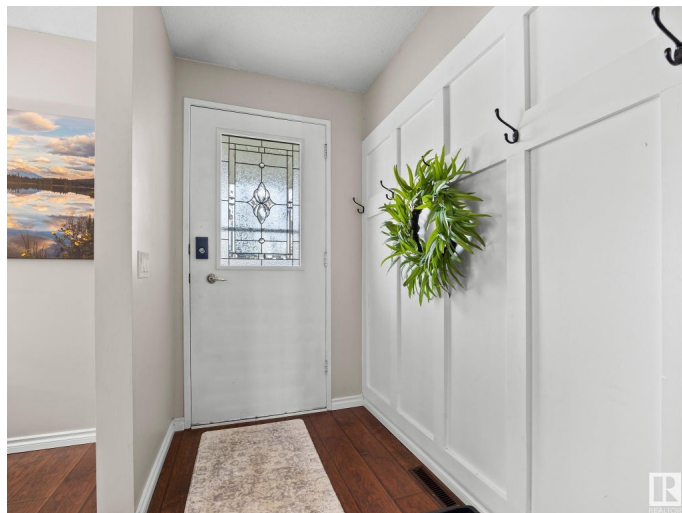
Westboro, Sherwood Park, AB

Welcome to this perfect family home in Westboro! This is a turn-key, beautifully maintained, fully finished 4 bedroom, 2 full bath bungalow. Enjoy updated stainless steel appliances, carpets in the basement and paint. Upstairs you will find 3 large bedrooms, and a 4 piece bath. In the fully finished basement you have a large rec room, a 3 piece bathroom and a massive additional bedroom. Some bonuses include central air conditioning, a large fully fenced back yard, complete with 2 sheds and a deck, a laundry shoot and more! Nestled in a friendly neighbourhood you have easy access to schools, parks and amenities!

Built in 1970

Essential Information

MLS® #	E4435416
Price	\$409,900
Bedrooms	4
Bathrooms	2.00
Full Baths	2
Square Footage	1,157
Acres	0.00
Year Built	1970
Type	Single Family
Sub-Type	Detached Single Family
Style	Bungalow



Status	Active
--------	--------

Community Information

Address	1035 Moyer Drive
Area	Sherwood Park
Subdivision	Westboro
City	Sherwood Park
County	ALBERTA
Province	AB
Postal Code	T8A 1E7

Amenities

Amenities	Air Conditioner, Deck, No Smoking Home, Parking-Extra
Parking	Front Drive Access

Interior

Appliances	Air Conditioning-Central, Dishwasher-Built-In, Dryer, Microwave Hood Fan, Refrigerator, Storage Shed, Stove-Electric, Washer, Window Coverings
Heating	Forced Air-1, Natural Gas
Stories	2
Has Basement	Yes
Basement	Full, Finished

Exterior

Exterior	Wood, Vinyl
Exterior Features	Fenced, Fruit Trees/Shrubs, Landscaped, No Back Lane, No Through Road
Roof	Asphalt Shingles
Construction	Wood, Vinyl
Foundation	Concrete Perimeter

Additional Information

Date Listed	May 9th, 2025
Days on Market	6
Zoning	Zone 25

DATA IS DEEMED RELIABLE BUT IS NOT GUARANTEED ACCURATE BY THE REALTORS® ASSOCIATION OF EDMONTON. COPYRIGHT 2025 BY THE REALTORS® ASSOCIATION OF EDMONTON. ALL RIGHTS RESERVED. Trademarks are owned or controlled by the Canadian Real Estate Association (CREA) and identify real estate professionals who are members of CREA (REALTOR®, REALTORS®) and/or the quality of services they provide (MLS®, Multiple Listing Service®).

