

Courtesy Of David Lofthaug Of Bode

\$619,900 - 37 Gable Common, Spruce Grove

MLS® #E4433648

\$619,900

3 Bedroom, 2.50 Bathroom, 1,885 sqft

Single Family on 0.00 Acres

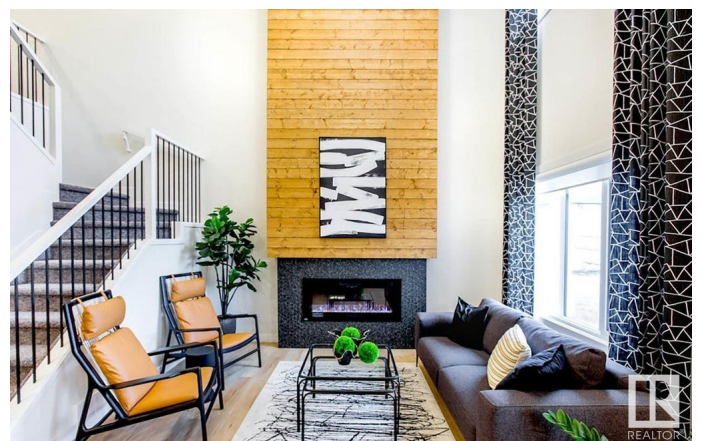
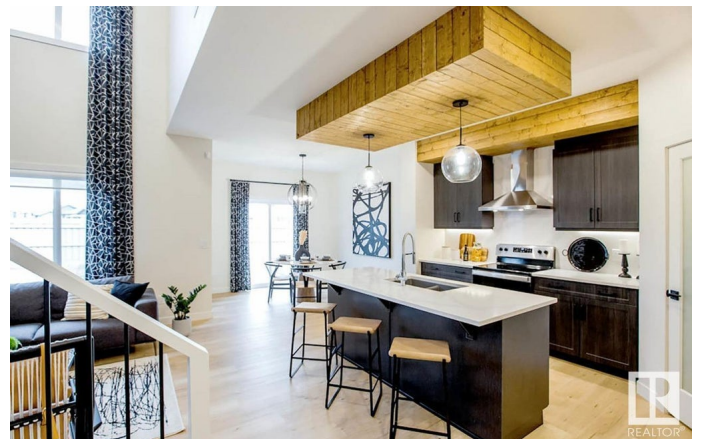
Greenbury, Spruce Grove, AB

The Tristen by San Rufo Homes is all about smart design and stunning details. As you step inside, youâ€™re greeted by an open-concept main floor that flows effortlessly from the kitchen to the dining area and great room. The kitchen features a large island, hood fan above the stove, walk-through pantry, and full quartz countertops that continue throughout the homeâ€™s including all bathrooms. The great room steals the show with its soaring open-to-above ceilings. From the upper floor, you can even look down into the great roomâ€™s adding a feeling of connection across both levels. Upstairs, the bonus room offers flexible space, while the primary bedroom provides a private retreat with a walk-in closet and a spa-inspired ensuite complete with dual sinks, a drop-in tub, and a separate shower. Two additional bedrooms, a full bath, and a second-floor laundry room round out the upper level for full convenience. Photos are representative.

Built in 2025

Essential Information

| | |
|-----------|-----------|
| MLS® # | E4433648 |
| Price | \$619,900 |
| Bedrooms | 3 |
| Bathrooms | 2.50 |



| | |
|----------------|------------------------|
| Full Baths | 2 |
| Half Baths | 1 |
| Square Footage | 1,885 |
| Acres | 0.00 |
| Year Built | 2025 |
| Type | Single Family |
| Sub-Type | Detached Single Family |
| Style | 2 Storey |
| Status | Active |

Community Information

| | |
|-------------|-----------------|
| Address | 37 Gable Common |
| Area | Spruce Grove |
| Subdivision | Greenbury |
| City | Spruce Grove |
| County | ALBERTA |
| Province | AB |
| Postal Code | T7X 2W2 |

Amenities

| | |
|----------------|---------------------------------|
| Amenities | No Animal Home, No Smoking Home |
| Parking Spaces | 4 |
| Parking | Double Garage Attached |

Interior

| | |
|-------------------|---------------------------|
| Interior Features | ensuite bathroom |
| Appliances | None |
| Heating | Forced Air-1, Natural Gas |
| Fireplace | Yes |
| Fireplaces | Insert |
| Stories | 2 |
| Has Basement | Yes |
| Basement | Full, Unfinished |

Exterior

| | |
|-------------------|---|
| Exterior | Wood, Stone, Vinyl |
| Exterior Features | Park/Reserve, Playground Nearby, Schools, Shopping Nearby |
| Roof | Asphalt Shingles |
| Construction | Wood, Stone, Vinyl |

Foundation Concrete Perimeter

Additional Information

Date Listed April 30th, 2025

Days on Market 116

Zoning Zone 91

DATA IS DEEMED RELIABLE BUT IS NOT GUARANTEED ACCURATE BY THE REALTORS® ASSOCIATION OF EDMONTON. COPYRIGHT 2025 BY THE REALTORS® ASSOCIATION OF EDMONTON. ALL RIGHTS RESERVED.Trademarks are owned or controlled by the Canadian Real Estate Association (CREA) and identify real estate professionals who are members of CREA (REALTOR®, REALTORS®) and/or the quality of services they provide (MLS®, Multiple Listing Service®)

Listing information last updated on August 24th, 2025 at 1:47am MDT