

\$649,707 - 16 Edison Drive, St. Albert

MLS® #E4431420

\$649,707

3 Bedroom, 2.50 Bathroom, 2,266 sqft

Single Family on 0.00 Acres

Erin Ridge North, St. Albert, AB

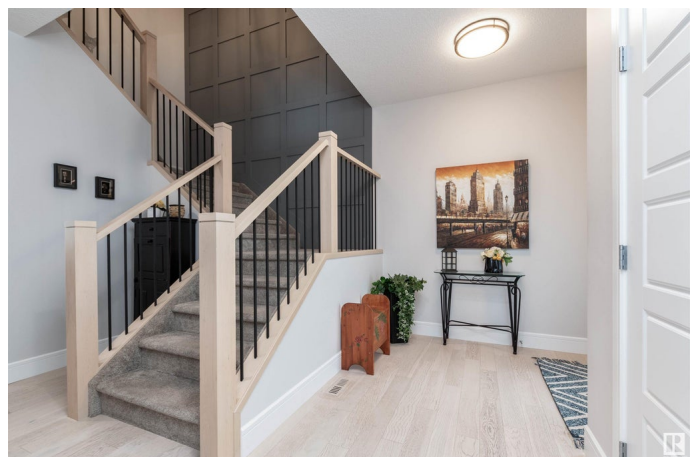
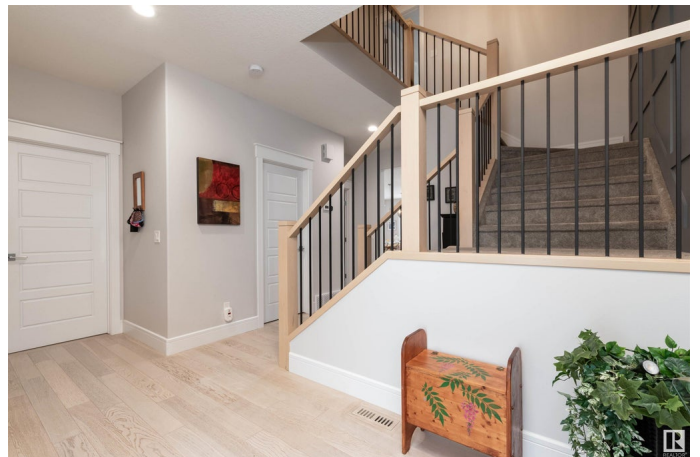
ST. ALBERT BEAUTY! You'll fall in love with this one from the moment you enter! Featuring an amazing open concept with 2264 square feet and superb quality finishings throughout. Feast your eyes on the GORGEOUS CHEF'S KITCHEN with Quartz counter tops, high end appliances, pantry and large dining area. Generous living room with attractive gas fireplace, main floor den/flex room, powder room, and a mud room. OVERSIZED & HEATED double attached garage. Upstairs are 3 large bedrooms, convenient laundry room with sink, large Bonus Room and a 4 piece bathroom. The Primary Bedroom offers a walk-in closet and a GORGEOUS 5 piece ensuite! Shower, dual sinks, and soaker tub. Lovely and beautifully landscaped front and backyard with crushed rock in front and artificial turf in back plus deck & patio. Central A/C too! Fabulous location close to parks and great amenities. Located in one of St. Albert's most desirable communities. Shows immaculate! See it and you will love it!! Visit REALTOR® website for more information.

Built in 2018

Essential Information

MLS® # E4431420

Price \$649,707



Bedrooms	3
Bathrooms	2.50
Full Baths	2
Half Baths	1
Square Footage	2,266
Acres	0.00
Year Built	2018
Type	Single Family
Sub-Type	Detached Single Family
Style	2 Storey
Status	Active

Community Information

Address	16 Edison Drive
Area	St. Albert
Subdivision	Erin Ridge North
City	St. Albert
County	ALBERTA
Province	AB
Postal Code	T8N 7W1

Amenities

Amenities	Air Conditioner, Patio
Parking	Double Garage Attached

Interior

Interior Features	ensuite bathroom
Appliances	Air Conditioning-Central, Dishwasher-Built-In, Dryer, Garage Control, Garage Opener, Hood Fan, Oven-Microwave, Refrigerator, Stove-Gas, Washer, Window Coverings, Garage Heater
Heating	Forced Air-1, Natural Gas
Fireplace	Yes
Fireplaces	Tile Surround
Stories	2
Has Basement	Yes
Basement	Full, Unfinished

Exterior

Exterior	Wood, Stone, Vinyl
----------	--------------------

Exterior Features	Fenced, Landscaped, Park/Reserve, Public Transportation, Shopping Nearby
Roof	Asphalt Shingles
Construction	Wood, Stone, Vinyl
Foundation	Concrete Perimeter

Additional Information

Date Listed	April 16th, 2025
Days on Market	15
Zoning	Zone 24

DATA IS DEEMED RELIABLE BUT IS NOT GUARANTEED ACCURATE BY THE REALTORS® ASSOCIATION OF EDMONTON. COPYRIGHT 2025 BY THE REALTORS® ASSOCIATION OF EDMONTON. ALL RIGHTS RESERVED.Trademarks are owned or controlled by the Canadian Real Estate Association (CREA) and identify real estate professionals who are members of CREA (REALTOR®, REALTORS®) and/or the quality of services they provide (MLS®, Multiple Listing Service®)

Listing information last updated on May 1st, 2025 at 3:32pm MDT