

\$1,995,000 - 1 Donsdale Crescent, Edmonton

MLS® #E4424093

\$1,995,000

3 Bedroom, 2.00 Bathroom, 2,379 sqft

Single Family on 0.00 Acres

Donsdale, Edmonton, AB

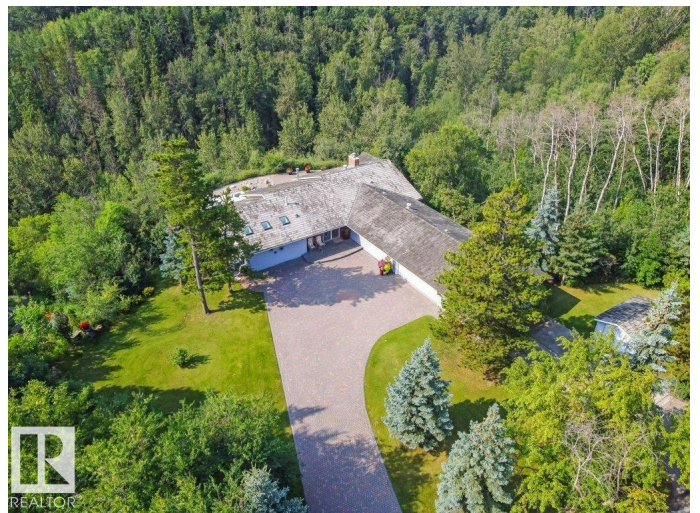
Nestled in the prestigious enclave of Donsdale, this exquisitely renovated and redesigned 2,379 square foot 3 bedroom bungalow epitomizes luxury living at its finest. On a one-acre lot that backs onto a picturesque ravine, this stunning home offers unparalleled privacy & breathtaking views. The seamless blend of modern sophistication & timeless elegance that defines every room. The thoughtful redesign showcases high-end finishes & top-of-the-line amenities. Located on a quiet street, this residence provides a peaceful retreat from the hustle and bustle of everyday life, cooking in the gourmet kitchen, or retiring to the luxurious bedrooms, every detail has been carefully curated for comfort & luxury. Imagine waking up to the soothing sounds of nature and enjoying your morning coffee on the deck as you take in the panoramic views of the ravine. This renovated bungalow in Donsdale is a rare find that combines natural beauty & tranquility in a prime location, stunning views, offering endless possibilities.

Built in 1955

Essential Information

MLS® # E4424093

Price \$1,995,000



Bedrooms	3
Bathrooms	2.00
Full Baths	2
Square Footage	2,379
Acres	0.00
Year Built	1955
Type	Single Family
Sub-Type	Detached Single Family
Style	Bungalow
Status	Active

Community Information

Address	1 Donsdale Crescent
Area	Edmonton
Subdivision	Donsdale
City	Edmonton
County	ALBERTA
Province	AB
Postal Code	T6M 2N3

Amenities

Amenities	Bar, Deck, Detectors Smoke, Patio, Sunroom, Wet Bar
Parking	Double Garage Attached, Over Sized

Interior

Interior Features	ensuite bathroom
Appliances	Alarm/Security System, Dishwasher-Built-In, Dryer, Garage Control, Garage Opener, Garburator, Microwave Hood Fan, Oven-Built-In, Refrigerator, Stove-Countertop Electric, Washer, Window Coverings
Heating	Forced Air-2, Natural Gas
Fireplace	Yes
Fireplaces	Brick Facing, Mantel
Stories	2
Has Basement	Yes
Basement	Full, Finished

Exterior

Exterior	Wood, Vinyl
Exterior Features	Backs Onto Park/Trees, Fruit Trees/Shrubs, Golf Nearby, Landscaped,

Low Maintenance Landscape, No Back Lane, Private Setting, Schools,
Shopping Nearby, Treed Lot

Roof	Cedar Shakes
Construction	Wood, Vinyl
Foundation	Concrete Perimeter

Additional Information

Date Listed	March 5th, 2025
Days on Market	196
Zoning	Zone 20

DATA IS DEEMED RELIABLE BUT IS NOT GUARANTEED ACCURATE BY THE REALTORS® ASSOCIATION OF EDMONTON. COPYRIGHT 2025 BY THE REALTORS® ASSOCIATION OF EDMONTON. ALL RIGHTS RESERVED. Trademarks are owned or controlled by the Canadian Real Estate Association (CREA) and identify real estate professionals who are members of CREA (REALTOR®, REALTORS®) and/or the quality of services they provide (MLS®, Multiple Listing Service®)

Listing information last updated on September 17th, 2025 at 12:17pm MDT